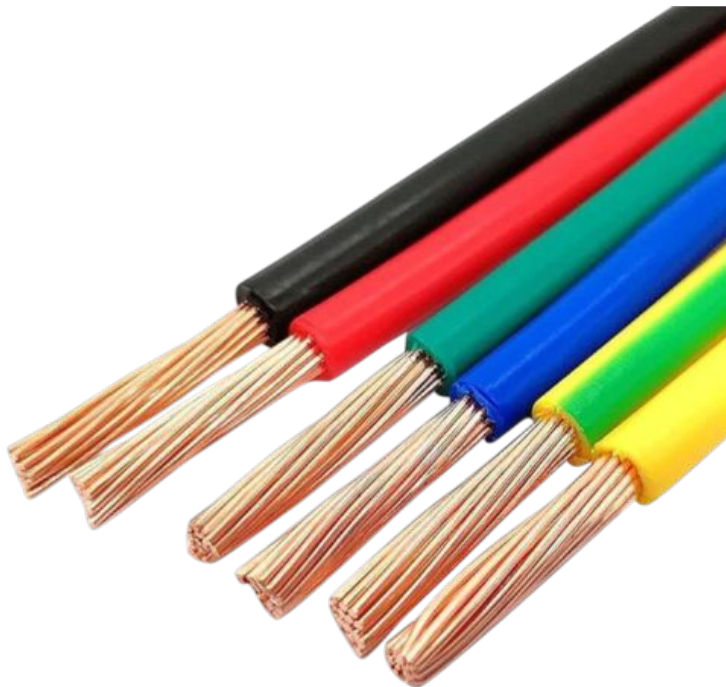
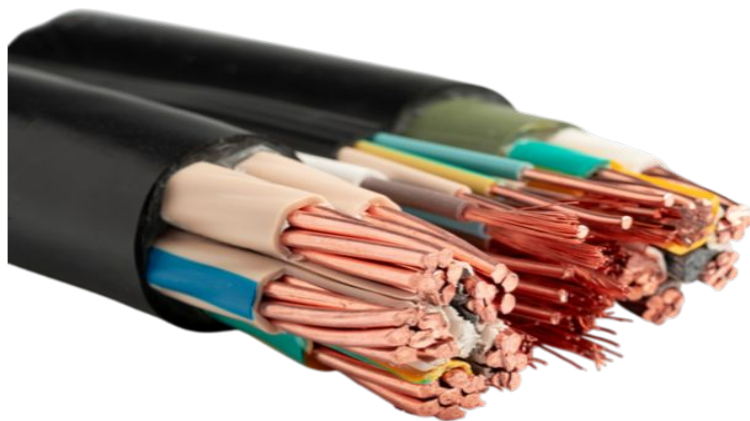


## WIRES & CABLES

COPPER WIRE (CU)		
THHN / THWN-2		
SIZE	PRICE/FT	PRICE/ 500FT
14 SOLID	\$ 0.13	\$ 65.77
12 SOLID	\$ 0.19	\$ 97.89
14 STR	\$ 0.14	\$ 70.07
12 STR	\$ 0.21	\$ 105.12
10 STR	\$ 0.33	\$ 166.57
8 STR	\$ 0.58	\$ 291.15
6 STR	\$ 0.90	\$ 453.30
4 STR	\$ 1.39	\$ 695.53
3 STR	\$ 1.73	\$ 869.41
2 STR	\$ 2.17	\$ 1088.24
1 STR	\$ 2.54	\$ 1272.78
1/0 STR	\$ 3.05	\$ 1529.88
2/0 STR	\$ 3.86	\$ 1933.58
3/0 STR	\$ 4.83	\$ 2419.00
4/0 STR	\$ 6.10	\$ 3051.73
250 Kcmil	\$ 7.23	\$ 3615.73
300 Kcmil	\$ 8.87	\$ 4439.69
350 Kcmil	\$ 9.83	\$ 4919.25
400 Kcmil	\$ 11.12	\$ 5563.87
500 Kcmil	\$ 14.25	\$ 7128.20
600 Kcmil	\$ 17.92	\$ 8960.07



*THHN Wires.*



*SJOOW Wires.*

SJOOW/SOOW Cord		
SIZE	PRICE/FT	PRICE/ 250FT
SJ 14/3	\$ 0.91	\$ 227.96
SJ 12/3	\$ 1.23	\$ 308.12
SJ 12/4	\$ 1.67	\$ 418.65
SJ 10/3	\$ 1.91	\$ 477.60
SJ 10/4	\$ 2.36	\$ 591.69
SO 8/3	\$ 2.86	\$ 716.73
SO 8/4	\$ 3.59	\$ 897.59
SO 6/3	\$ 4.01	\$ 1004.76
SO 6/4	\$ 4.89	\$ 1223.58
SO 4/3	-	\$-
SO 4/4	\$ 7.74	\$ 1936.96

**NOTES:**

1. Prices might varies without notice.
2. Prices may varies, depending of the project and the quantities.

## WIRES & CABLES

ALUMINUM WIRE		
SIZE	PRICE/FT	PRICE/ 500FT
250 Kcmil	\$ 1.62	\$ 813.15
300 Kcmil	\$ 2.06	\$ 1034.15
350 Kcmil	\$ 2.21	\$ 1108.25
400 Kcmil	\$ 2.54	\$ 1274.00
500 Kcmil	\$ 2.89	\$ 1448.85
600 Kcmil	\$ 3.63	\$ 1818.05



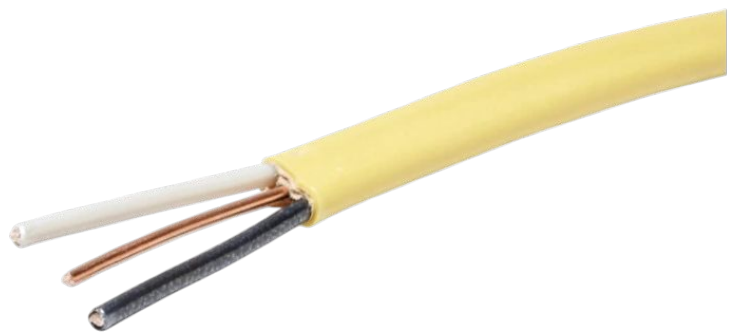
*Aluminum Wires.*



*MC Cables.*

MC CABLE		
SIZE	PRICE/FT	PRICE/ 250FT
14/2	\$ 0.74	\$ 185.42
14/3	\$ 1.23	\$ 309.32
12/2	\$ 0.74	\$ 186.00
12/4	\$ 1.85	\$ 463.11
12/3	\$ 1.31	\$ 328.42
10/2	\$ 1.69	\$ 424.72
10/3	\$ 2.38	\$ 595.22
8/2	\$ 2.20	\$ 551.37
8/3	\$ 3.10	\$ 775.75
6/2	\$ 3.26	\$ 816.40
6/3	\$ 4.48	\$ 1121.40
12-2/16-2	\$ 2.59	\$ 649.57
12-3/16/2	\$ 2.92	\$ 730.23

NM CABLES (ROMEX)		
SIZE	PRICE/FT	PRICE/ 250FT
14/2	\$ 0.35	\$ 87.87
14/3	\$ 0.46	\$ 117.01
12/2	\$ 0.52	\$ 130.16
12/3	\$ 0.71	\$ 178.57
10/2	\$ 0.90	\$ 227.10
10/3	\$ 1.13	\$ 282.78
8/2	\$ 1.51	\$ 378.58
8/3	\$ 2.13	\$ 532.98
6/2	\$ 2.13	\$ 534.69
6/3	\$ 3.11	\$ 778.90



*NM Cables.*

**NOTES:**

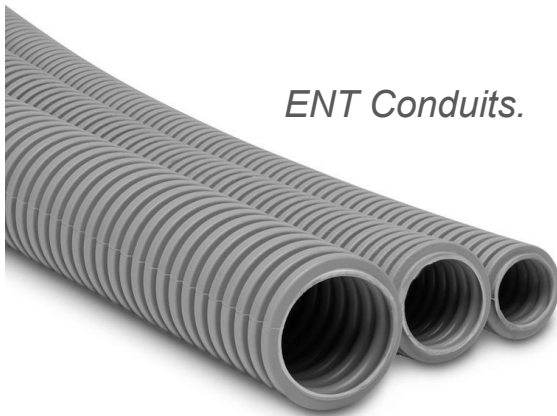
1. Prices might varies without notice.
2. Prices may varies, depending of the project and the quantities.

## CONDUITS

EMT 1/2 " - 4"	
SIZE	PRICE
1/2 "	\$ 47.28
3/4"	\$ 81.09
1"	\$ 132.97
1 1/4"	\$ 218.36
1 1/2"	\$ 264.34
2"	\$ 308.73
2 1/2"	\$ 464.07
3"	\$ 588.57
3 1/2"	\$ 783.28
4"	\$ 800.43



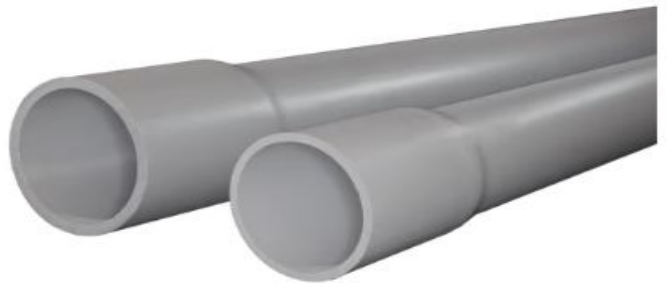
*EMT Conduits.*



*ENT Conduits.*

ENT Conduit 1/2 " - 2"	
SIZE	PRICE
1/2"	\$ 52.66
3/4"	\$ 83.69
1"	\$ 124.42
1-1/4"	\$ 228.88
1-1/2"	\$ 307.49
2"	\$ 366.09

PVC 1/2 " - 4"		
SIZE	PVC 40 PRICE	PVC 80 PRICE
1/2 "	\$ 27.37	\$ 41.74
3/4"	\$ 33.85	\$ 55.66
1"	\$ 48.85	\$ 77.36
1 1/4"	\$ 71.55	\$ 103.90
1 1/2"	\$ 87.54	\$ 124.12
2"	\$ 109.92	\$ 164.98
2 1/2"	\$ 175.20	\$ 259.92
3"	\$ 220.02	\$ 316.51
3 1/2"	\$258.73	\$ 420.56
4"	\$283.67	\$ 458.13



*PVC 40 Conduits.*

**NOTES:**

1. Prices might varies without notice.
2. Prices may varies, depending of the project and the quantities.
3. Prices /100 ft.

## CONDUITS

Flexible Metallic Conduit (FMC) 1/2 " - 4"	
SIZE	PRICE
1/2 "	\$ 86.81
3/4"	\$ 119.37
1"	\$ 224.94
1 1/4"	\$ 312.98
1 1/2"	\$ 448.23
2"	\$ 571.86
2 1/2"	\$ 735.65
3"	\$ 1202.51
3 1/2"	\$ 1387.98
4"	\$ 1545.57



*FMC Conduits.*



*RMC Conduits.*

RIGID Conduit		
SIZE	IMC PRICE	RMC PRICE
1/2 "	\$ 143.27	\$ 179.71
3/4"	\$ 177.63	\$ 195.49
1"	\$ 272.27	\$ 336.71
1 1/4"	\$ 364.27	\$ 476.19
1 1/2"	\$ 453.25	\$ 583.90
2"	\$ 570.05	\$ 665.97
2 1/2"	\$ 1126.19	\$ 1250.89
3"	\$ 1473.77	\$ 1413.29
3 1/2"	\$ 1730.98	\$ 1798.38
4"	\$ 1946.49	\$ 1976.14

Liquid Tight - Metallic (LTM) & Liquid Tight Non-Metallic (LTNM) Conduit 1/2 " - 4"		
SIZE	LTM PRICE	LTNM PRICE
1/2 "	\$ 114.23	\$ 54.06
3/4"	\$ 147.32	\$ 75.43
1"	\$ 216.72	\$ 120.34
1 1/4"	\$ 280.78	\$ 178.09
1 1/2"	\$ 530.59	\$ 221.91
2"	\$ 612.80	\$ 305.58
2 1/2"	\$ 1143.40	-
3"	\$ 1403.89	-
3 1/2"	\$ 2140.55	-
4"	\$ 2270.79	-



*LTM Conduits.*

**NOTES:**

1. Prices might varies without notice.
2. Prices may varies, depending of the project and the quantities.
3. Prices /100 ft.