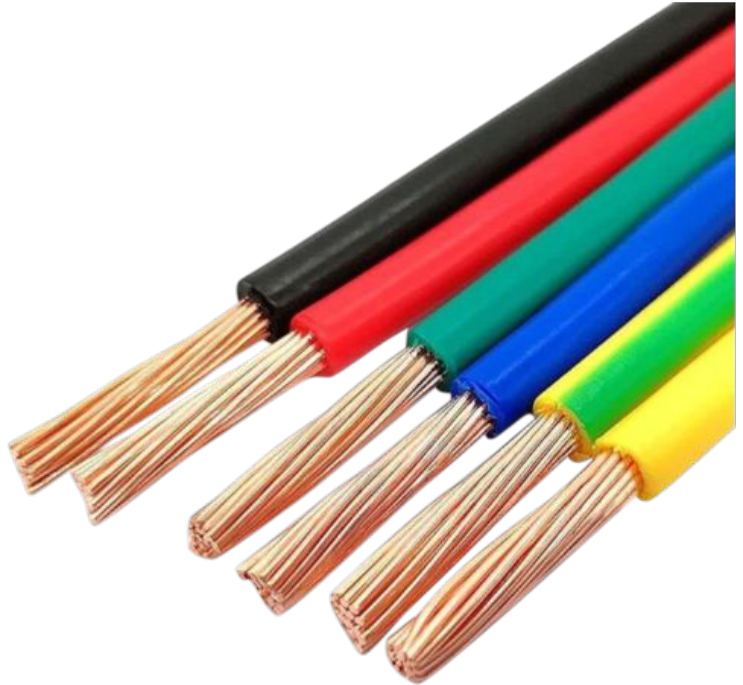
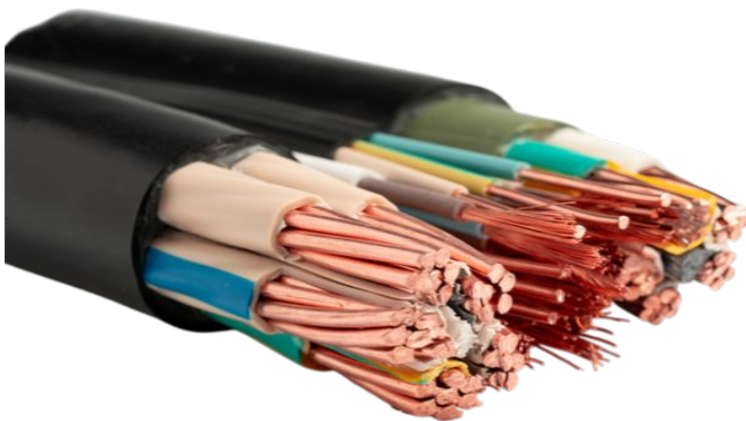


WIRES & CABLES

| COPPER WIRE (CU) | | |
|------------------|----------|--------------|
| THHN / THWN-2 | | |
| SIZE | PRICE/FT | PRICE/ 500FT |
| 14 SOLID | \$ 0.13 | \$ 65.77 |
| 12 SOLID | \$ 0.19 | \$ 97.89 |
| 14 STR | \$ 0.14 | \$ 70.07 |
| 12 STR | \$ 0.21 | \$ 105.12 |
| 10 STR | \$ 0.33 | \$ 166.57 |
| 8 STR | \$ 0.58 | \$ 291.15 |
| 6 STR | \$ 0.90 | \$ 453.30 |
| 4 STR | \$ 1.39 | \$ 695.53 |
| 3 STR | \$ 1.73 | \$ 869.41 |
| 2 STR | \$ 2.17 | \$ 1088.24 |
| 1 STR | \$ 2.54 | \$ 1272.78 |
| 1/0 STR | \$ 3.05 | \$ 1529.88 |
| 2/0 STR | \$ 3.86 | \$ 1933.58 |
| 3/0 STR | \$ 4.83 | \$ 2419.00 |
| 4/0 STR | \$ 6.10 | \$ 3051.73 |
| 250 Kcmil | \$ 7.23 | \$ 3615.73 |
| 300 Kcmil | \$ 8.87 | \$ 4439.69 |
| 350 Kcmil | \$ 9.83 | \$ 4919.25 |
| 400 Kcmil | \$ 11.12 | \$ 5563.87 |
| 500 Kcmil | \$ 14.25 | \$ 7128.20 |
| 600 Kcmil | \$ 17.92 | \$ 8960.07 |



THHN Wires.



SJOOW Wires.

| SJOOW/SOOW Cord | | |
|-----------------|----------|--------------|
| SIZE | PRICE/FT | PRICE/ 250FT |
| SJ 14/3 | \$ 0.91 | \$ 227.96 |
| SJ 12/3 | \$ 1.23 | \$ 308.12 |
| SJ 12/4 | \$ 1.67 | \$ 418.65 |
| SJ 10/3 | \$ 1.91 | \$ 477.60 |
| SJ 10/4 | \$ 2.36 | \$ 591.69 |
| SO 8/3 | \$ 2.86 | \$ 716.73 |
| SO 8/4 | \$ 3.59 | \$ 897.59 |
| SO 6/3 | \$ 4.01 | \$ 1004.76 |
| SO 6/4 | \$ 4.89 | \$ 1223.58 |
| SO 4/3 | - | \$- |
| SO 4/4 | \$ 7.74 | \$ 1936.96 |

NOTES:

1. Prices might varies without notice.
2. Prices may varies, depending of the project and the quantities.

WIRES & CABLES

| ALUMINUM WIRE | | |
|---------------|----------|--------------|
| SIZE | PRICE/FT | PRICE/ 500FT |
| 250 Kcmil | \$ 1.59 | \$ 798.20 |
| 300 Kcmil | \$ 2.08 | \$ 1041.95 |
| 350 Kcmil | \$ 2.17 | \$ 1188.75 |
| 400 Kcmil | \$ 2.46 | \$ 1232.40 |
| 500 Kcmil | \$ 2.79 | \$ 1398.80 |
| 600 Kcmil | \$ 2.50 | \$ 1753.70 |



Aluminum Wires.



MC Cables.

| MC CABLE | | |
|-----------|----------|--------------|
| SIZE | PRICE/FT | PRICE/ 250FT |
| 14/2 | \$ 0.74 | \$ 185.42 |
| 14/3 | \$ 1.23 | \$ 309.32 |
| 12/2 | \$ 0.74 | \$ 186.00 |
| 12/4 | \$ 1.85 | \$ 463.11 |
| 12/3 | \$ 1.31 | \$ 328.42 |
| 10/2 | \$ 1.69 | \$ 424.72 |
| 10/3 | \$ 2.38 | \$ 595.22 |
| 8/2 | \$ 2.20 | \$ 551.37 |
| 8/3 | \$ 3.10 | \$ 775.75 |
| 6/2 | \$ 3.26 | \$ 816.40 |
| 6/3 | \$ 4.48 | \$ 1121.40 |
| 12-2/16-2 | \$ 2.59 | \$ 649.57 |
| 12-3/16/2 | \$ 2.92 | \$ 730.23 |

| NM CABLES (ROMEX) | | |
|-------------------|----------|--------------|
| SIZE | PRICE/FT | PRICE/ 250FT |
| 14/2 | \$ 0.33 | \$ 84.32 |
| 14/3 | \$ 0.44 | \$ 112.28 |
| 12/2 | \$ 0.49 | \$ 124.90 |
| 12/3 | \$ 0.68 | \$ 171.36 |
| 10/2 | \$ 0.87 | \$ 217.93 |
| 10/3 | \$ 1.08 | \$ 271.37 |
| 8/2 | \$ 1.45 | \$ 363.30 |
| 8/3 | \$ 2.04 | \$ 511.46 |
| 6/2 | \$ 2.05 | \$ 513.10 |
| 6/3 | \$ 2.98 | \$ 747.46 |



NM Cables.

NOTES:

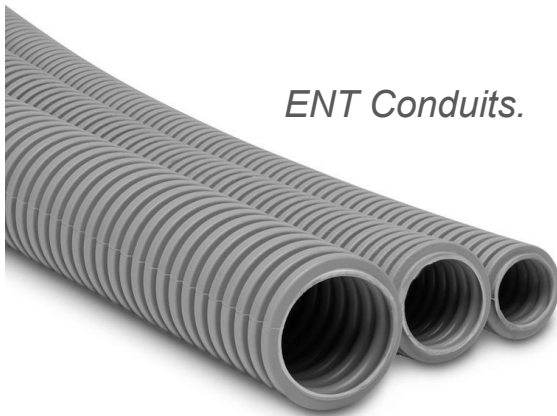
1. Prices might varies without notice.
2. Prices may varies, depending of the project and the quantities.

CONDUITS

| EMT 1/2 " - 4" | |
|----------------|-----------|
| SIZE | PRICE |
| 1/2 " | \$ 47.28 |
| 3/4" | \$ 81.09 |
| 1" | \$ 132.97 |
| 1 1/4" | \$ 218.36 |
| 1 1/2" | \$ 264.34 |
| 2" | \$ 308.73 |
| 2 1/2" | \$ 464.07 |
| 3" | \$ 588.57 |
| 3 1/2" | \$ 783.28 |
| 4" | \$ 800.43 |



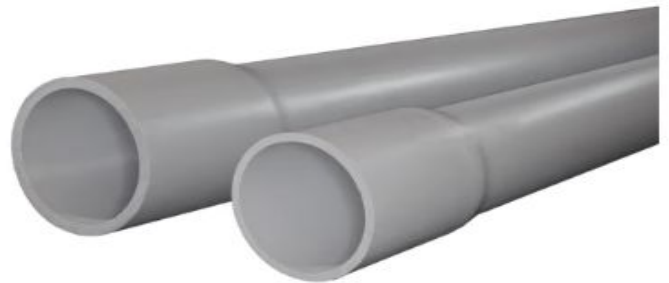
EMT Conduits.



ENT Conduits.

| ENT Conduit 1/2 " - 2" | |
|------------------------|-----------|
| SIZE | PRICE |
| 1/2" | \$ 52.66 |
| 3/4" | \$ 83.69 |
| 1" | \$ 124.42 |
| 1-1/4" | \$ 228.88 |
| 1-1/2" | \$ 307.49 |
| 2" | \$ 366.09 |

| PVC 1/2 " - 4" | | |
|----------------|--------------|--------------|
| SIZE | PVC 40 PRICE | PVC 80 PRICE |
| 1/2 " | \$ 27.37 | \$ 41.74 |
| 3/4" | \$ 33.85 | \$ 55.66 |
| 1" | \$ 48.85 | \$ 77.36 |
| 1 1/4" | \$ 71.55 | \$ 103.90 |
| 1 1/2" | \$ 87.54 | \$ 124.12 |
| 2" | \$ 109.92 | \$ 164.98 |
| 2 1/2" | \$ 175.20 | \$ 259.92 |
| 3" | \$ 220.02 | \$ 316.51 |
| 3 1/2" | \$258.73 | \$ 420.56 |
| 4" | \$283.67 | \$ 458.13 |



PVC 40 Conduits.

NOTES:

1. Prices might varies without notice.
2. Prices may varies, depending of the project and the quantities.
3. Prices /100 ft.

CONDUITS

| Flexible Metallic Conduit (FMC) 1/2 " - 4" | |
|--|------------|
| SIZE | PRICE |
| 1/2 " | \$ 87.49 |
| 3/4" | \$ 120.32 |
| 1" | \$ 226.74 |
| 1 1/4" | \$ 315.50 |
| 1 1/2" | \$ 451.82 |
| 2" | \$ 576.43 |
| 2 1/2" | \$ 741.55 |
| 3" | \$ 1212.11 |
| 3 1/2" | \$ 1399.08 |
| 4" | \$ 1557.94 |



FMC Conduits.



RMC Conduits.

| RIGID Conduit | | |
|---------------|------------|------------|
| SIZE | IMC PRICE | RMC PRICE |
| 1/2 " | \$ 143.27 | \$ 179.71 |
| 3/4" | \$ 177.63 | \$ 195.49 |
| 1" | \$ 272.27 | \$ 336.71 |
| 1 1/4" | \$ 364.27 | \$ 476.19 |
| 1 1/2" | \$ 453.25 | \$ 583.90 |
| 2" | \$ 570.05 | \$ 665.97 |
| 2 1/2" | \$ 1126.19 | \$ 1250.89 |
| 3" | \$ 1473.77 | \$ 1413.29 |
| 3 1/2" | \$ 1730.98 | \$ 1798.38 |
| 4" | \$ 1946.49 | \$ 1976.14 |

| Liquid Tight - Metallic (LTM) & Liquid Tight Non-Metallic (LTNM) Conduit 1/2 " - 4" | | |
|---|------------|------------|
| SIZE | LTM PRICE | LTNM PRICE |
| 1/2 " | \$ 106.62 | \$ 50.46 |
| 3/4" | \$ 137.50 | \$ 70.40 |
| 1" | \$ 202.27 | \$ 112.31 |
| 1 1/4" | \$ 262.05 | \$ 166.22 |
| 1 1/2" | \$ 495.22 | \$ 207.12 |
| 2" | \$ 571.95 | \$ 285.21 |
| 2 1/2" | \$ 1067.17 | - |
| 3" | \$ 1310.30 | - |
| 3 1/2" | \$ 1997.84 | - |
| 4" | \$ 2119.40 | - |



LTM Conduits.

NOTES:

1. Prices might varies without notice.
2. Prices may varies, depending of the project and the quantities.
3. Prices /100 ft.