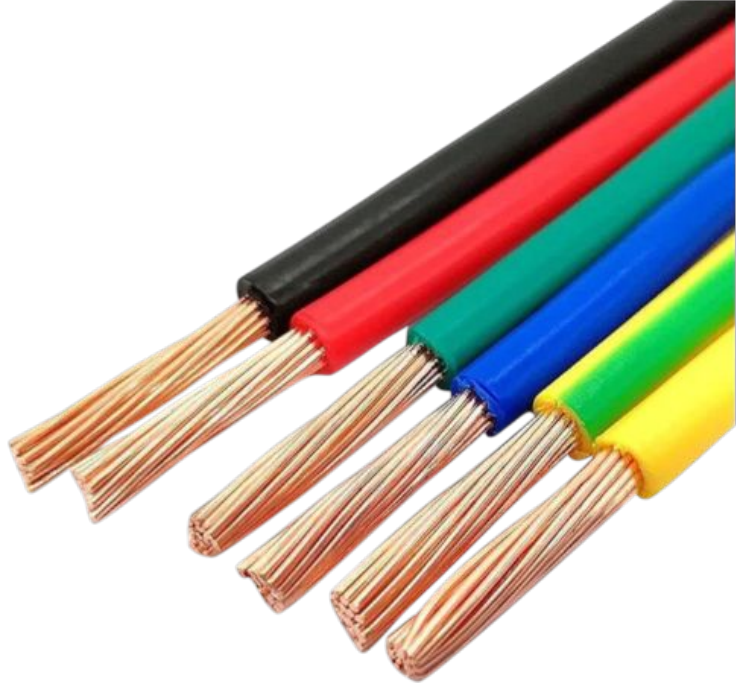
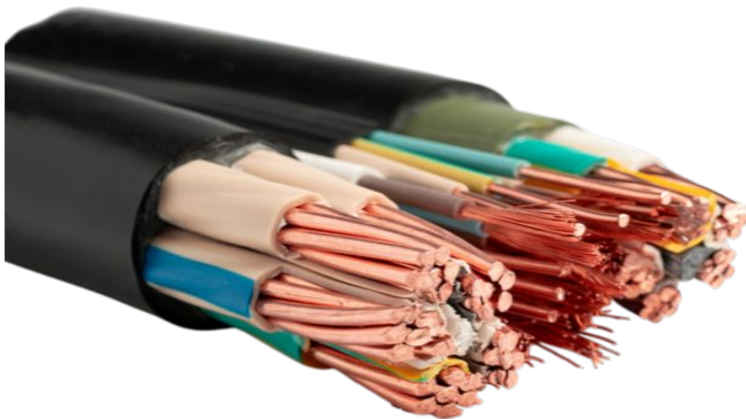


## WIRES & CABLES

COPPER WIRE (CU)		
THHN / THWN-2		
SIZE	PRICE/FT	PRICE/ 500FT
14 SOLID	\$ 0.13	\$ 65.77
12 SOLID	\$ 0.19	\$ 97.89
14 STR	\$ 0.14	\$ 70.07
12 STR	\$ 0.21	\$ 105.12
10 STR	\$ 0.33	\$ 166.57
8 STR	\$ 0.58	\$ 291.15
6 STR	\$ 0.90	\$ 453.30
4 STR	\$ 1.39	\$ 695.53
3 STR	\$ 1.73	\$ 869.41
2 STR	\$ 2.17	\$ 1088.24
1 STR	\$ 2.54	\$ 1272.78
1/0 STR	\$ 3.05	\$ 1529.88
2/0 STR	\$ 3.86	\$ 1933.58
3/0 STR	\$ 4.83	\$ 2419.00
4/0 STR	\$ 6.10	\$ 3051.73
250 Kcmil	\$ 7.23	\$ 3615.73
300 Kcmil	\$ 8.87	\$ 4439.69
350 Kcmil	\$ 9.83	\$ 4919.25
400 Kcmil	\$ 11.12	\$ 5563.87
500 Kcmil	\$ 14.25	\$ 7128.20
600 Kcmil	\$ 17.92	\$ 8960.07



*THHN Wires.*



*SJOOW Wires.*

SJOOW/SOOW Cord		
SIZE	PRICE/FT	PRICE/ 250FT
SJ 14/3	\$ 0.91	\$ 227.96
SJ 12/3	\$ 1.23	\$ 308.12
SJ 12/4	\$ 1.67	\$ 418.65
SJ 10/3	\$ 1.91	\$ 477.60
SJ 10/4	\$ 2.36	\$ 591.69
SO 8/3	\$ 2.86	\$ 716.73
SO 8/4	\$ 3.59	\$ 897.59
SO 6/3	\$ 4.01	\$ 1004.76
SO 6/4	\$ 4.89	\$ 1223.58
SO 4/3	-	\$-
SO 4/4	\$ 7.74	\$ 1936.96

**NOTES:**

1. Prices might varies without notice.
2. Prices may varies, depending of the project and the quantities.

## WIRES & CABLES

ALUMINUM WIRE		
SIZE	PRICE/FT	PRICE/ 500FT
250 Kcmil	\$ 1.59	\$ 798.20
300 Kcmil	\$ 2.08	\$ 1041.95
350 Kcmil	\$ 2.17	\$ 1088.75
400 Kcmil	\$ 2.46	\$ 1232.40
500 Kcmil	\$ 2.79	\$ 1398.80
600 Kcmil	\$ 2.50	\$ 1753.70



*Aluminum Wires.*

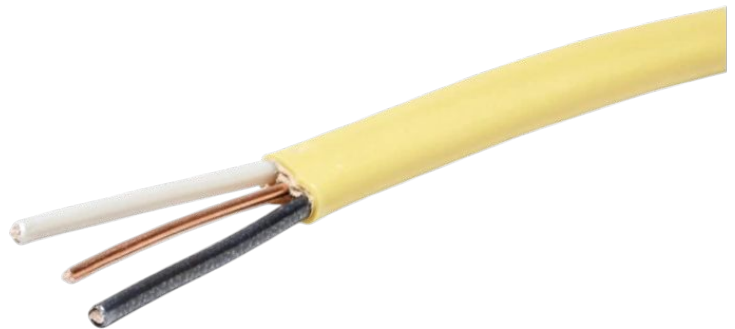


*MC Cables.*

MC CABLE		
SIZE	PRICE/FT	PRICE/ 250FT
14/2	\$ 0.74	\$ 185.42
14/3	\$ 1.23	\$ 309.32
12/2	\$ 0.74	\$ 186.00
12/4	\$ 1.85	\$ 463.11
12/3	\$ 1.31	\$ 328.42
10/2	\$ 1.69	\$ 424.72
10/3	\$ 2.38	\$ 595.22
8/2	\$ 2.20	\$ 551.37
8/3	\$ 3.10	\$ 775.75
6/2	\$ 3.26	\$ 816.40
6/3	\$ 4.48	\$ 1121.40
* 12-2/16-2	\$ 1.68	\$ 421.00
*12-3/16/2	\$ 2.01	\$ 504.74

\*LUMINARY

NM CABLES (ROMEX)		
SIZE	PRICE/FT	PRICE/ 250FT
14/2	\$ 0.36	\$ 91.04
14/3	\$ 0.48	\$ 121.23
12/2	\$ 0.53	\$ 134.86
12/3	\$ 0.74	\$ 185.02
10/2	\$ 0.94	\$ 235.30
10/3	\$ 1.17	\$ 293.00
8/2	\$ 1.56	\$ 392.26
8/3	\$ 2.20	\$ 552.23
6/2	\$ 2.21	\$ 554.00
6/3	\$ 3.22	\$ 807.03



*NM Cables.*

**NOTES:**

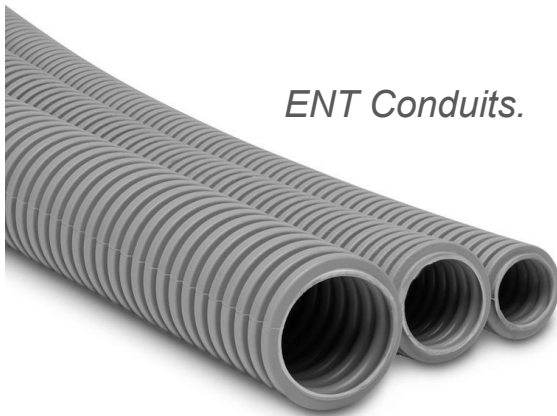
1. Prices might varies without notice.
2. Prices may varies, depending of the project and the quantities.

## CONDUITS

EMT 1/2 " - 4"	
SIZE	PRICE
1/2 "	\$ 50.66
3/4"	\$ 86.91
1"	\$ 145.53
1 1/4"	\$ 234.18
1 1/2"	\$ 291.31
2"	\$ 334.91
2 1/2"	\$ 506.36
3"	\$ 634.27
3 1/2"	\$ 852.94
4"	\$ 868.10



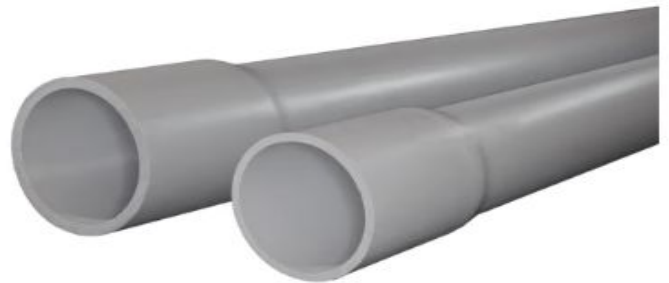
*EMT Conduits.*



*ENT Conduits.*

ENT Conduit 1/2 " - 2"	
SIZE	PRICE
1/2"	\$ 52.66
3/4"	\$ 83.69
1"	\$ 124.42
1-1/4"	\$ 228.88
1-1/2"	\$ 307.49
2"	\$ 366.09

PVC 1/2 " - 4"		
SIZE	PVC 40 PRICE	PVC 80 PRICE
1/2 "	\$ 30.42	\$ 42.79
3/4"	\$ 33.55	\$ 59.63
1"	\$ 49.34	\$ 85.70
1 1/4"	\$ 68.78	\$ 106.30
1 1/2"	\$ 84.34	\$ 133.79
2"	\$ 110.96	\$ 175.34
2 1/2"	\$ 175.46	\$ 258.23
3"	\$ 212.14	\$ 322.94
3 1/2"	\$270.01	\$ 473.53
4"	\$298.71	\$ 478.97



*PVC 40 Conduits.*

**NOTES:**

1. Prices might varies without notice.
2. Prices may varies, depending of the project and the quantities.
3. Prices /100 ft.

## CONDUITS

Flexible Metallic Conduit (FMC) 1/2 " - 4"	
SIZE	PRICE
1/2 "	\$ 87.49
3/4"	\$ 120.32
1"	\$ 226.74
1 1/4"	\$ 315.50
1 1/2"	\$ 451.82
2"	\$ 576.43
2 1/2"	\$ 741.55
3"	\$ 1212.11
3 1/2"	\$ 1399.08
4"	\$ 1557.94



*FMC Conduits.*



*RMC Conduits.*

RIGID Conduit		
SIZE	IMC PRICE	RMC PRICE
1/2 "	\$ 143.27	\$ 192.46
3/4"	\$ 177.63	\$ 220.72
1"	\$ 272.27	\$ 351.79
1 1/4"	\$ 364.27	\$ 516.50
1 1/2"	\$ 453.25	\$ 545.28
2"	\$ 570.05	\$ 721.83
2 1/2"	\$ 1126.19	\$ 1364.16
3"	\$ 1473.77	\$ 1518.47
3 1/2"	\$ 1730.98	\$ 2066.24
4"	\$ 1946.49	\$ 2206.54

Liquid Tight - Metallic (LTM) & Liquid Tight Non-Metallic (LTNM) Conduit 1/2 " - 4"		
SIZE	LTM PRICE	LTNM PRICE
1/2 "	\$ 106.62	\$ 50.46
3/4"	\$ 137.50	\$ 70.40
1"	\$ 202.27	\$ 112.31
1 1/4"	\$ 262.05	\$ 166.22
1 1/2"	\$ 495.22	\$ 207.12
2"	\$ 571.95	\$ 285.21
2 1/2"	\$ 1067.17	-
3"	\$ 1310.30	-
3 1/2"	\$ 1997.84	-
4"	\$ 2119.40	-



*LTM Conduits.*

**NOTES:**

1. Prices might varies without notice.
2. Prices may varies, depending of the project and the quantities.
3. Prices /100 ft.